

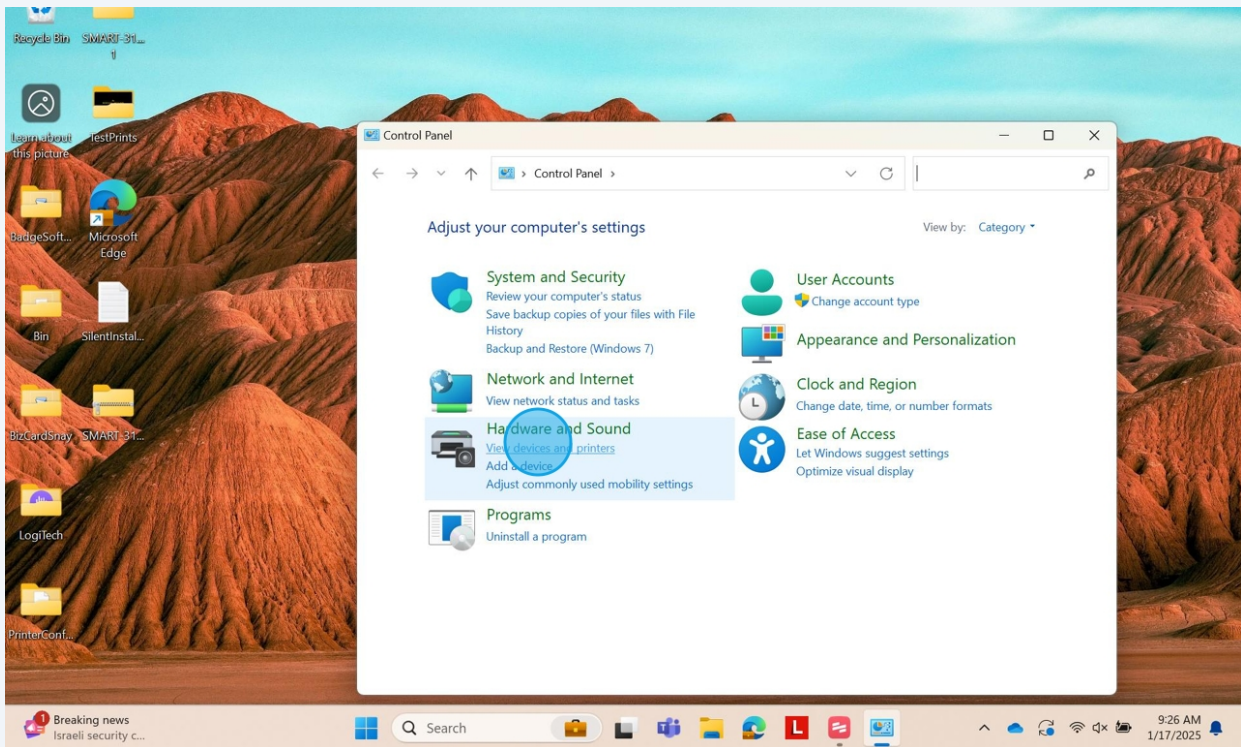
Adjust Print Positioning

Adjusting the x and y positions in IDP Printers

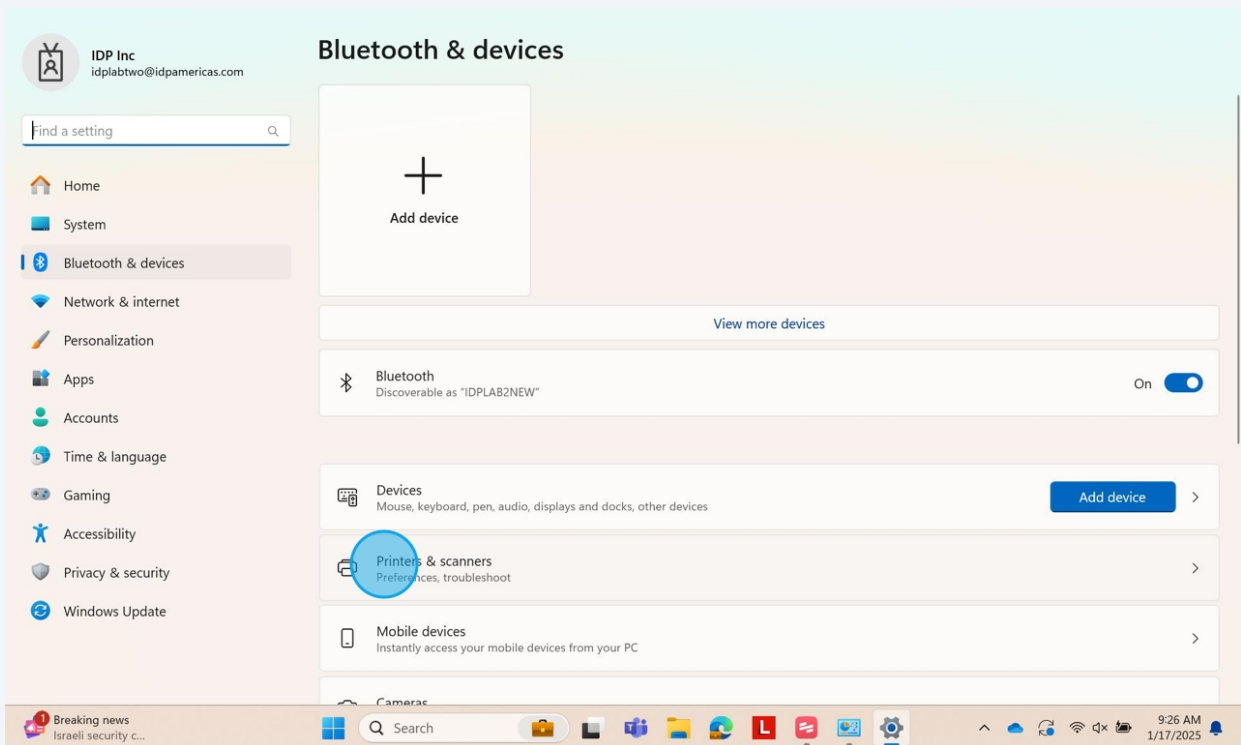
- 1 Click windows search bar open control panel.



2 Click "View devices and printers"

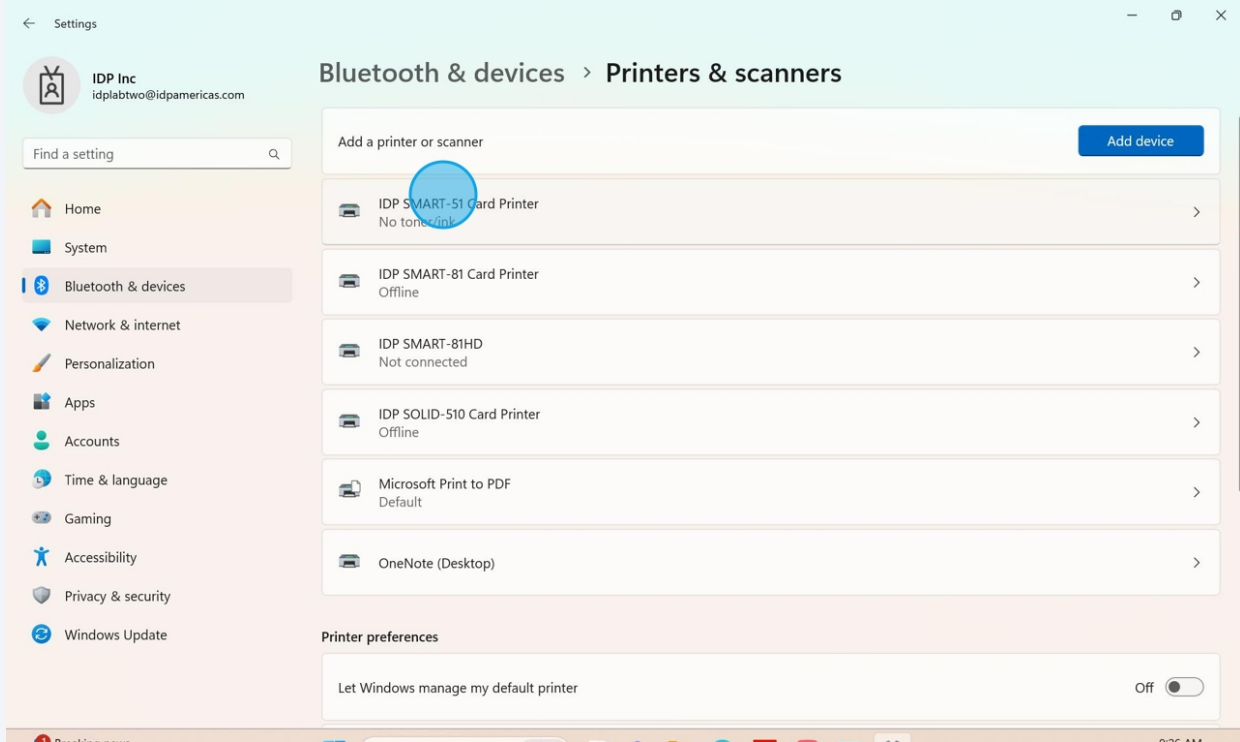


3 Click "Printers & Scanners"

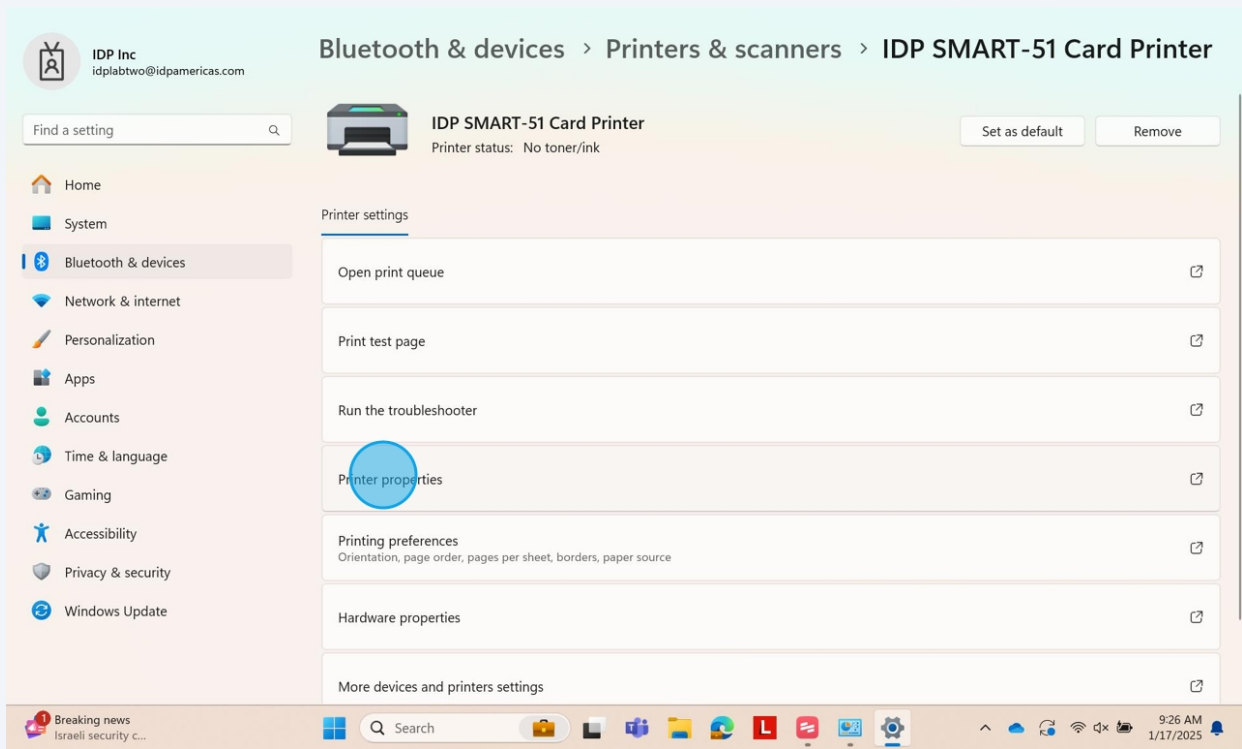


4

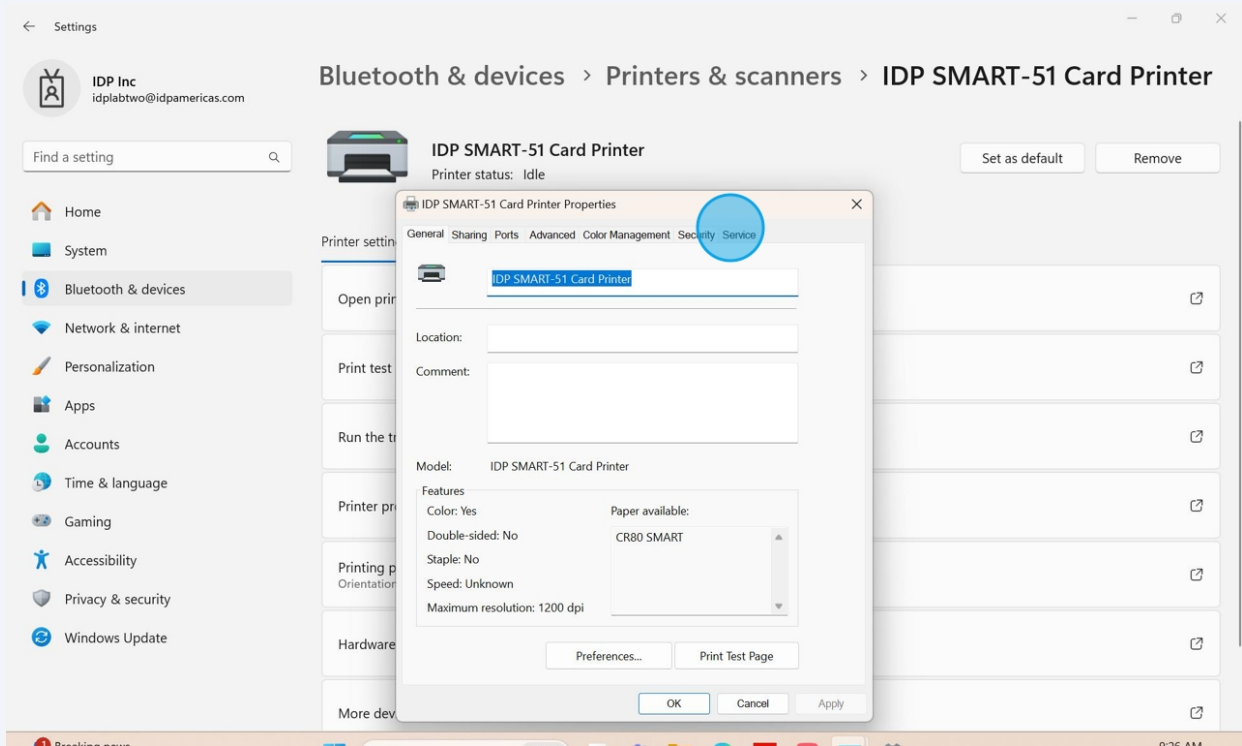
Click "IDP SMART-51 Card Printer" or IDP Printer being used



5 Click "Printer properties"

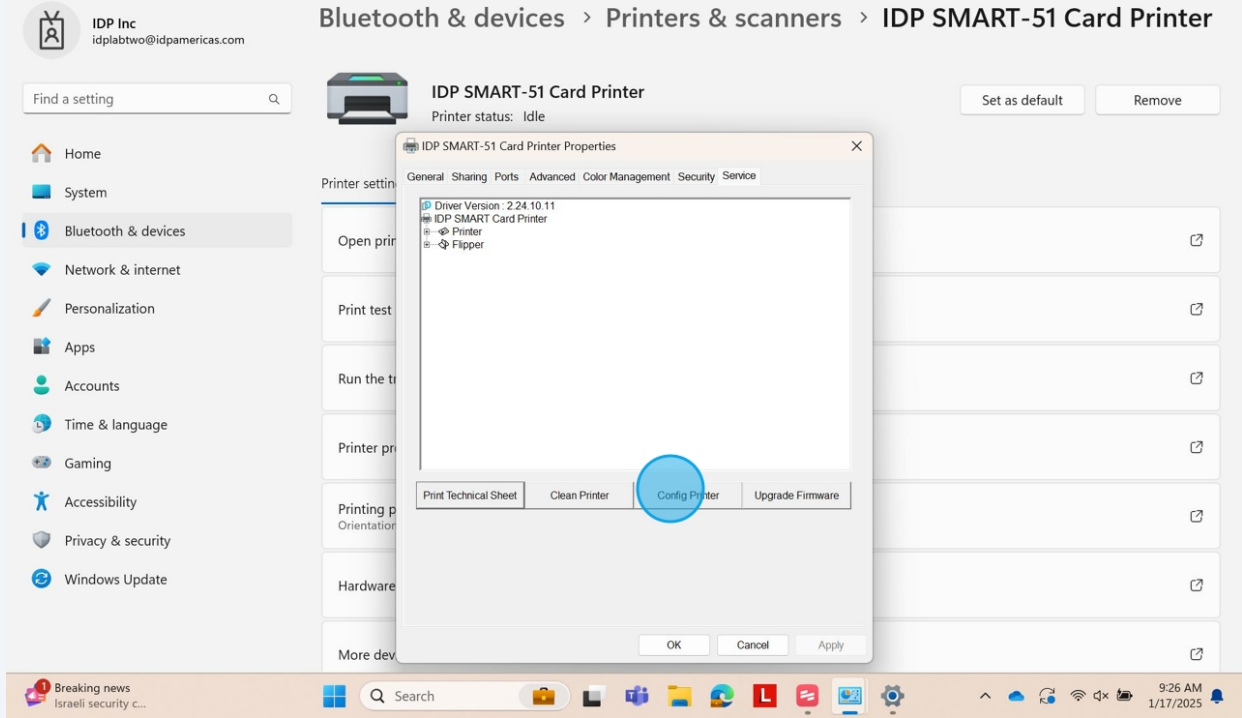


6 Click "Service" Tab

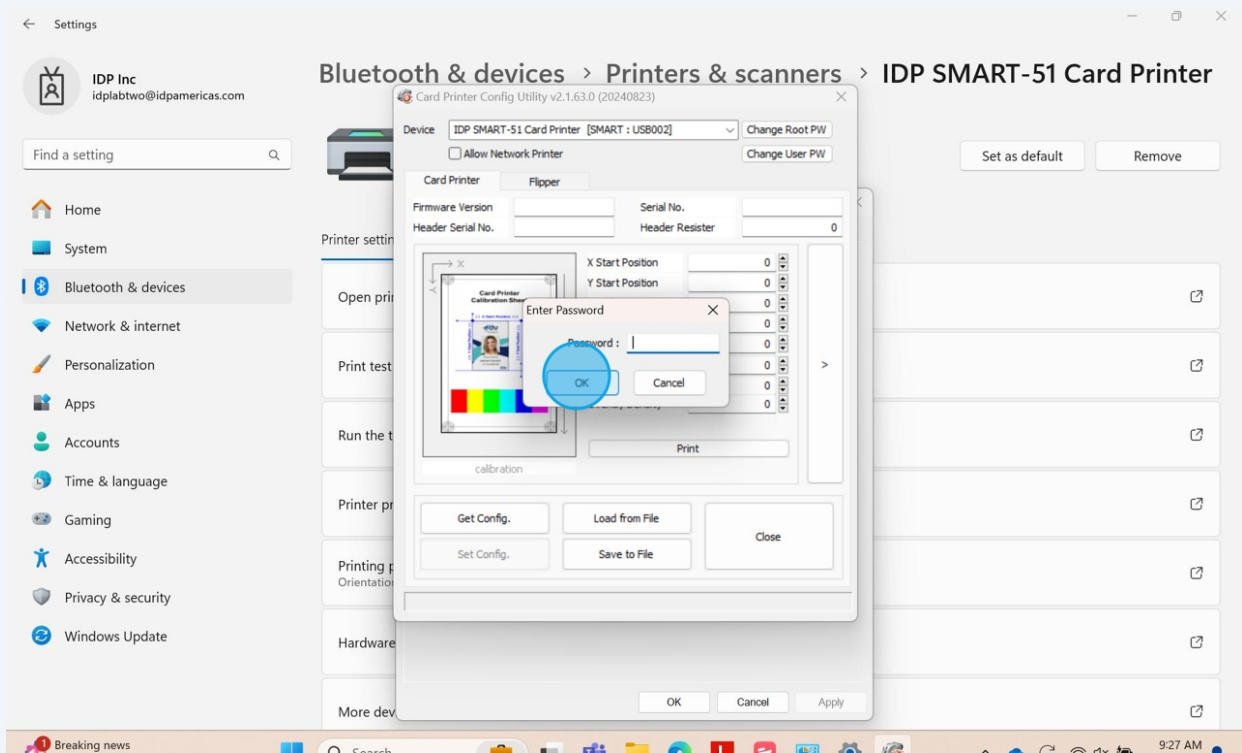


7

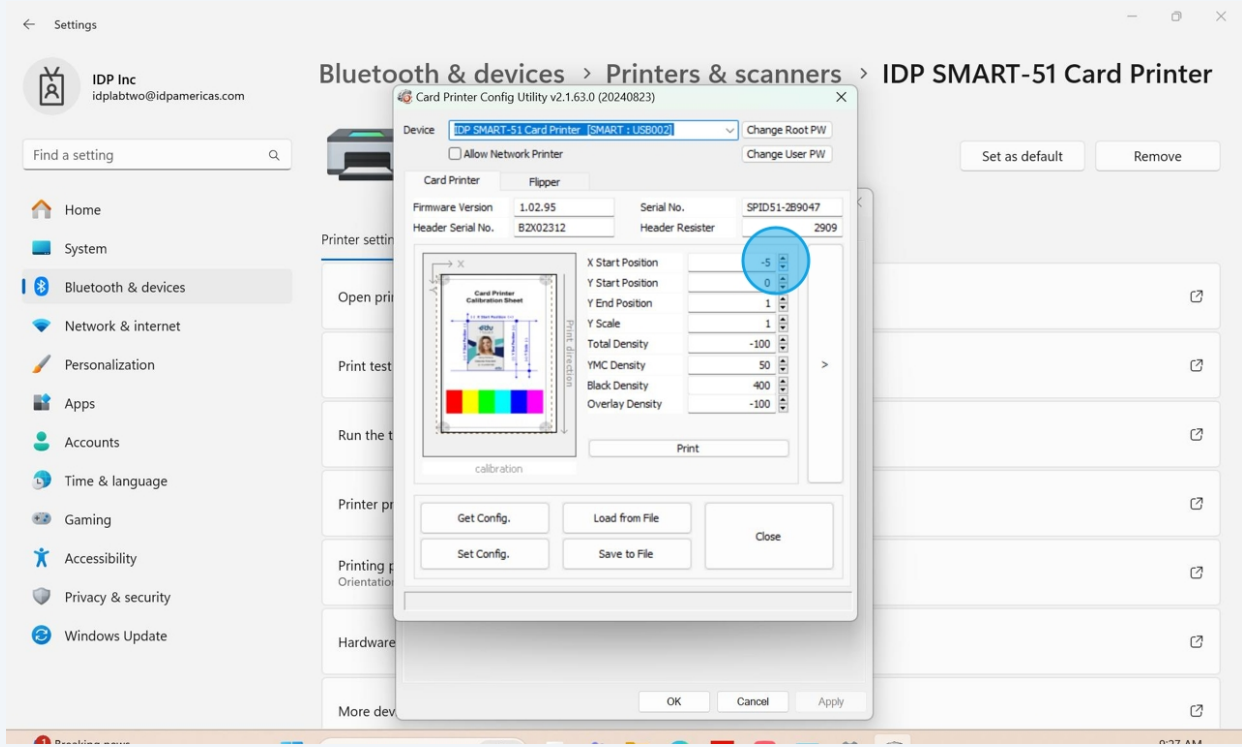
Click "Config Printer"



8 Click "OK" when the password prompt pops up. Do not enter anything

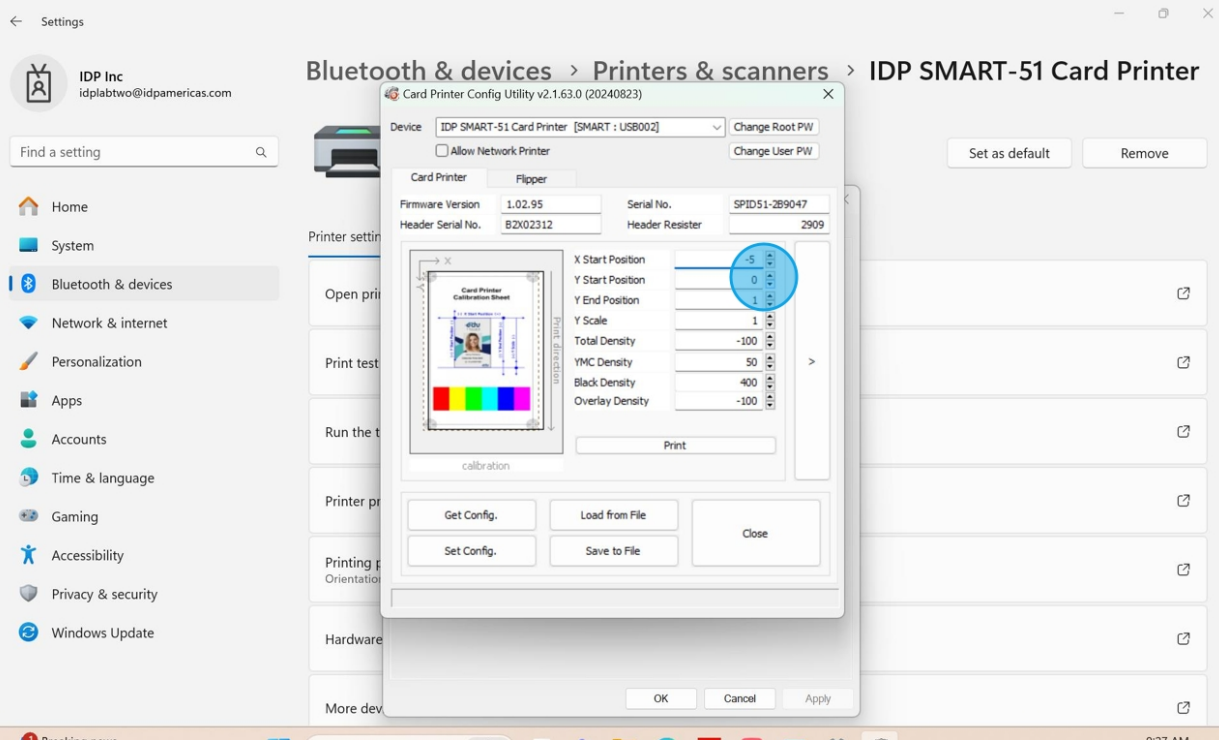


9 Click up or down on the X position to move the card on the X axis (Shown in the left test page, will adjust as you move)



10

Click "Backward" to adjust the Y position (Note the image will also move as you adjust and make changes)



11

Click "Set Config." and wait for loading to complete (Green bar will load through at bottom left)

The screenshot shows the Windows Settings application with the 'Bluetooth & devices' section open. The 'Printers & scanners' list shows the 'IDP SMART-51 Card Printer'. A configuration utility window titled 'Card Printer Config Utility v2.1.63.0 (20240823)' is overlaid on the settings. The utility window has a 'Device' dropdown set to 'IDP SMART-51 Card Printer [SMART : USB002]'. It includes a 'Print' button and a 'Set Config.' button, which is highlighted with a blue circle. The utility also displays various printer parameters such as Firmware Version (1.02.95), Serial No. (SPIDS1-2B9047), and density settings.

Parameter	Value
Firmware Version	1.02.95
Header Serial No.	BZK02312
Serial No.	SPIDS1-2B9047
Header Resister	2909
X Start Position	-5
Y Start Position	1
Y End Position	1
Y Scale	1
Total Density	-100
YMC Density	50
Black Density	400
Overlay Density	-100