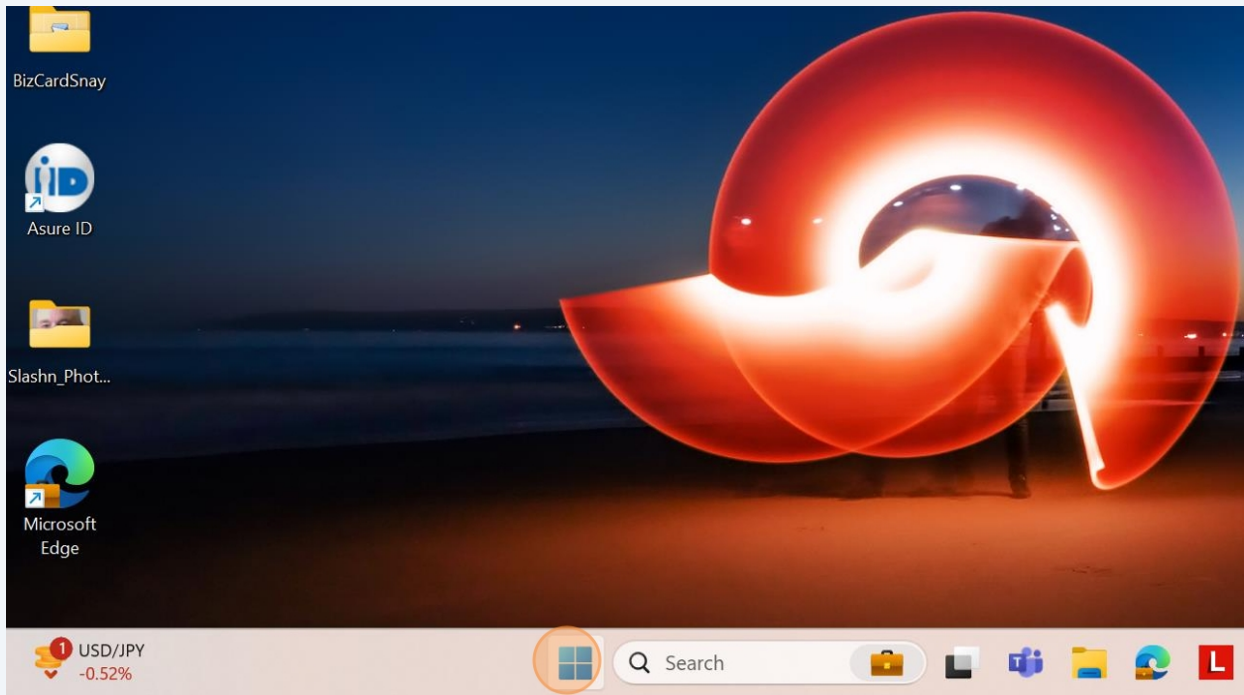


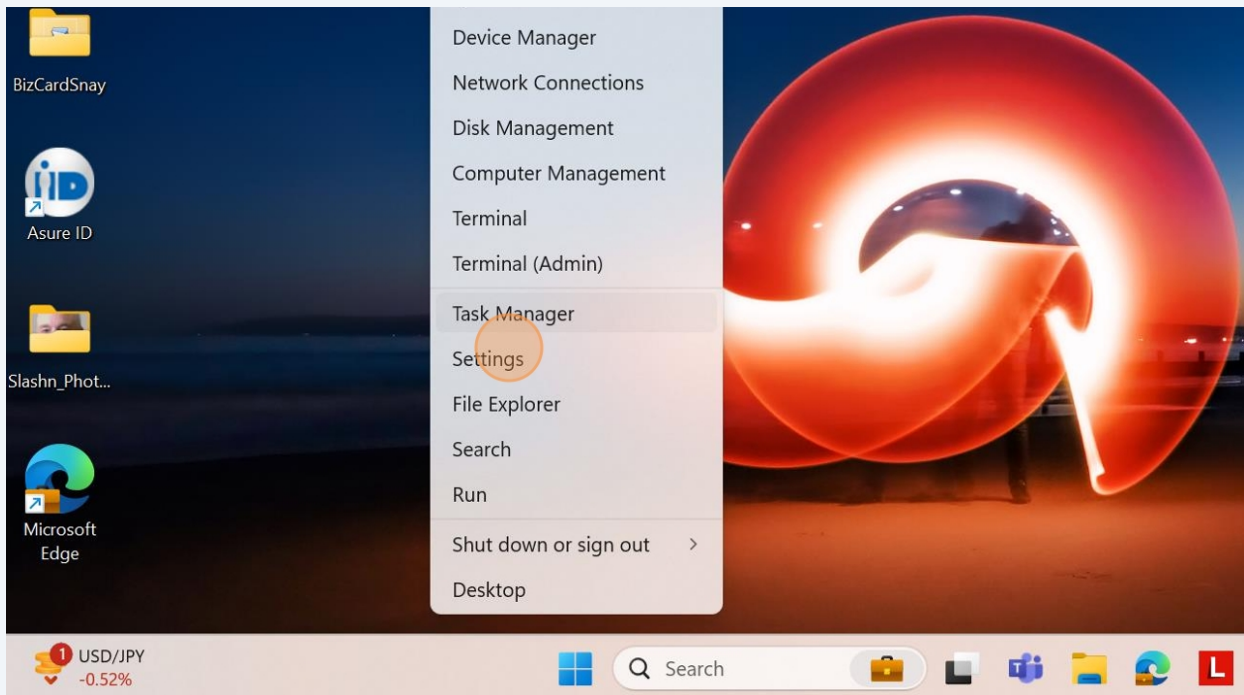
Changing Printer Mask



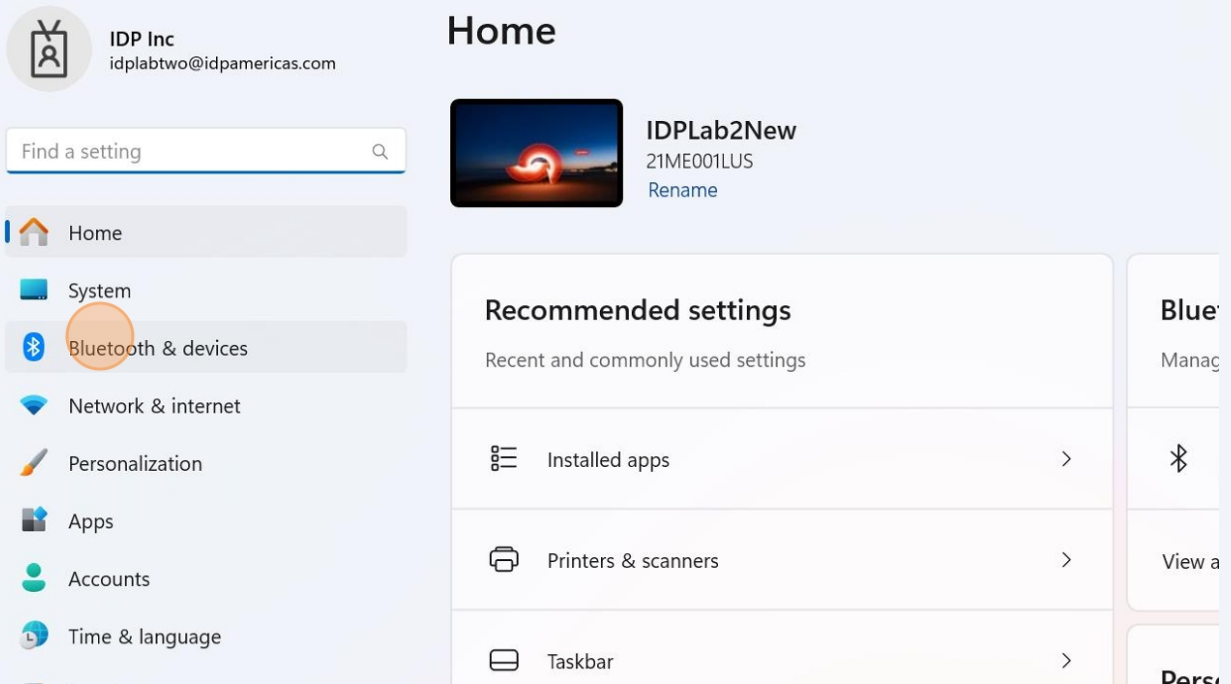
1 Right click Windows Start Button



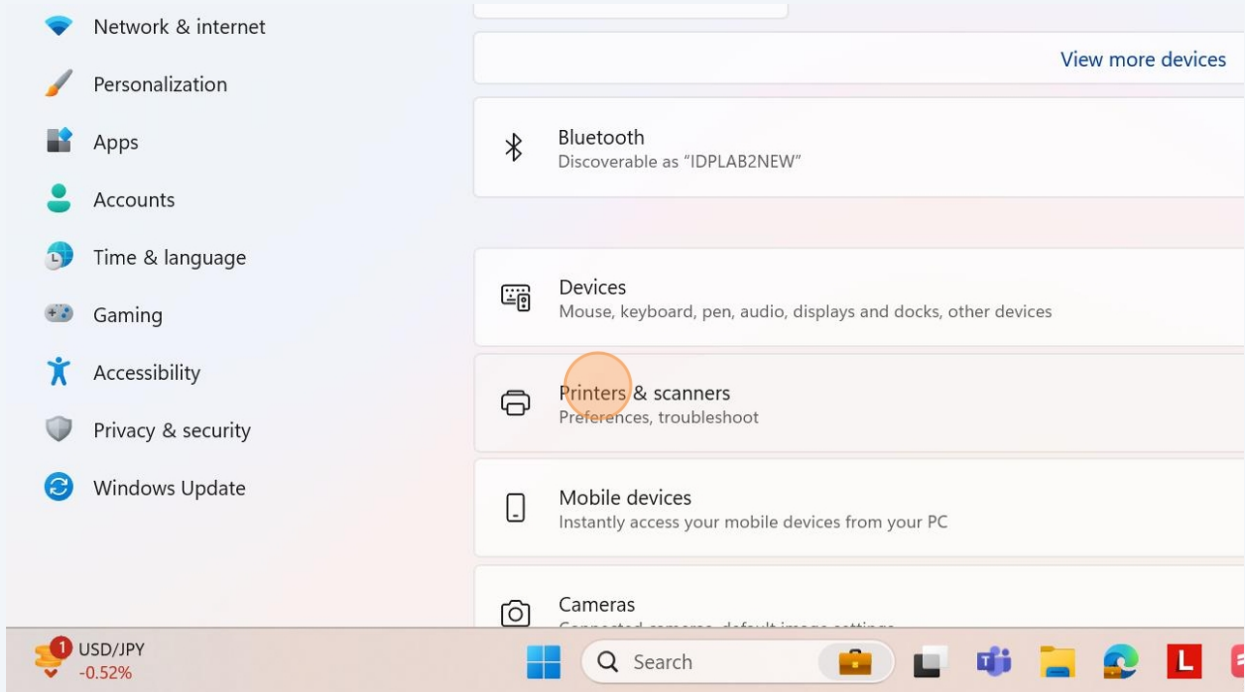
2 Click "Settings"



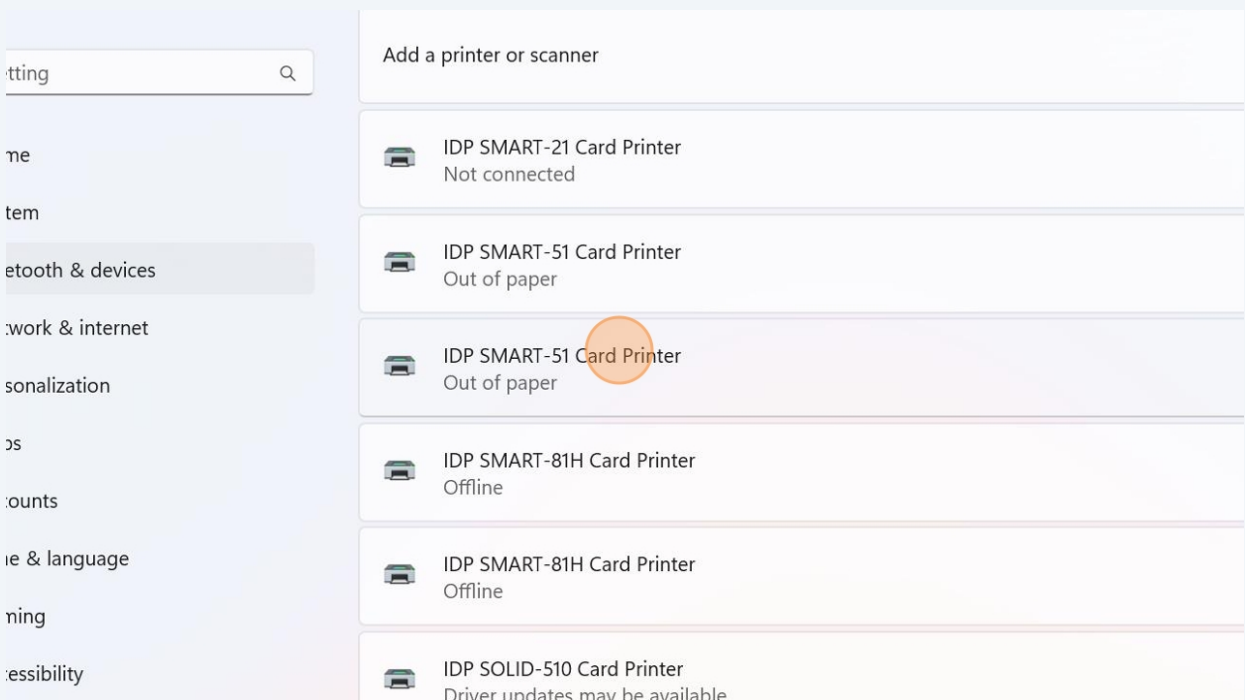
3 Click "Bluetooth & devices"



4 Click "Printers & scanners"

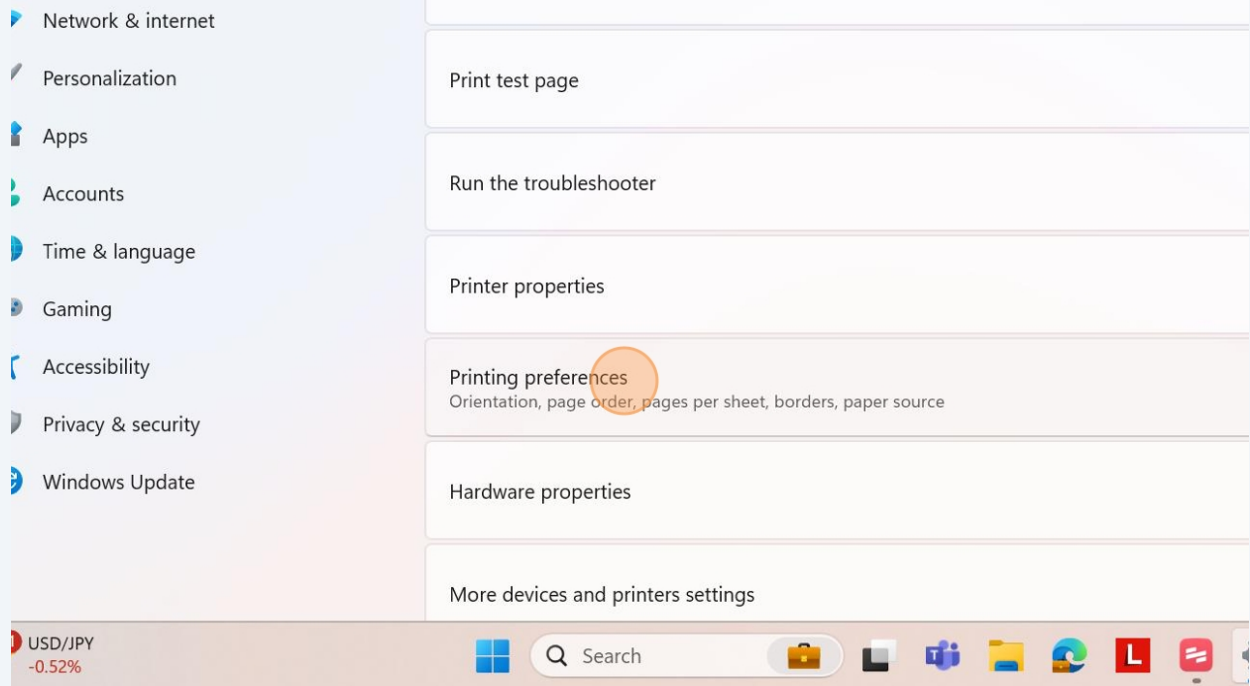


5 Click "IDP SMART-51 Card Printer" or Printing Being Utilized



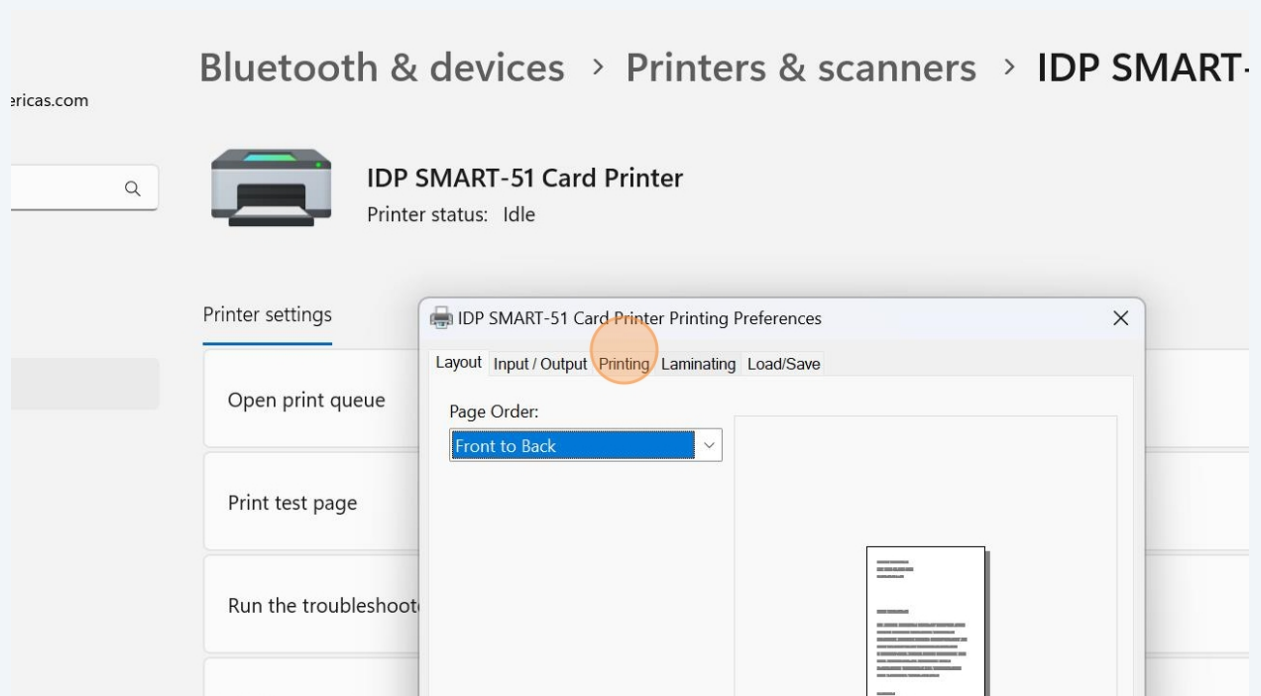
6

Click "Printing preferences" for older OS click manage first then preferences will show

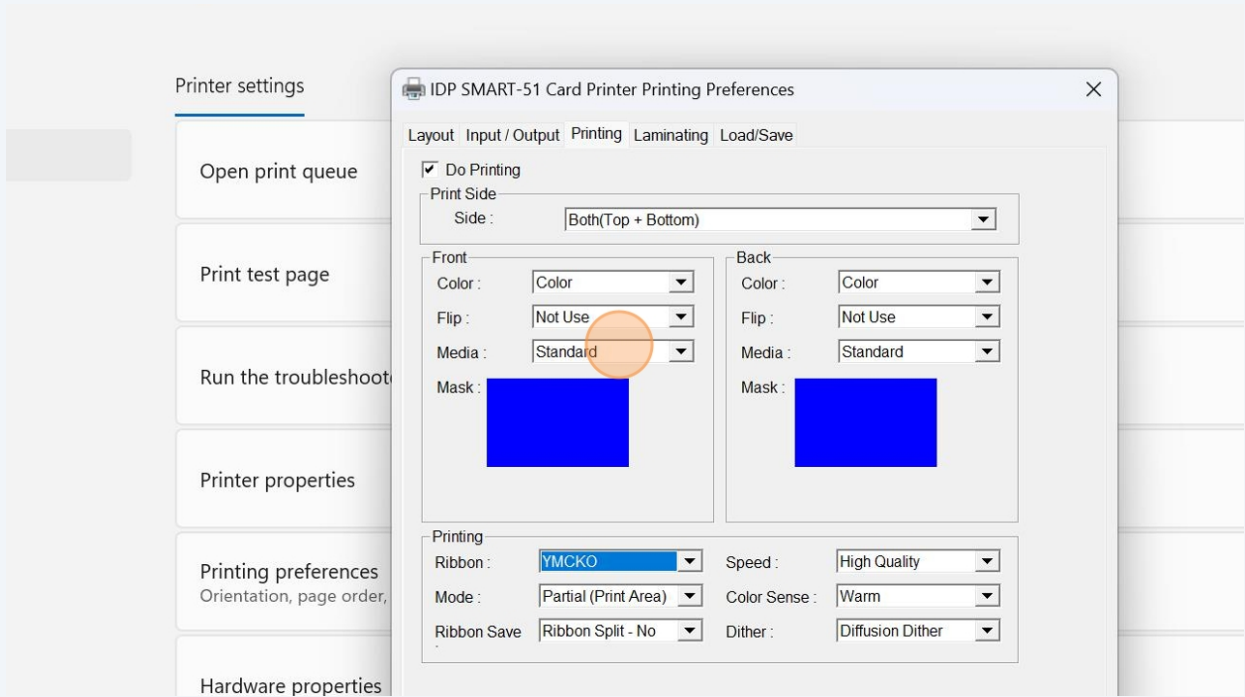


7

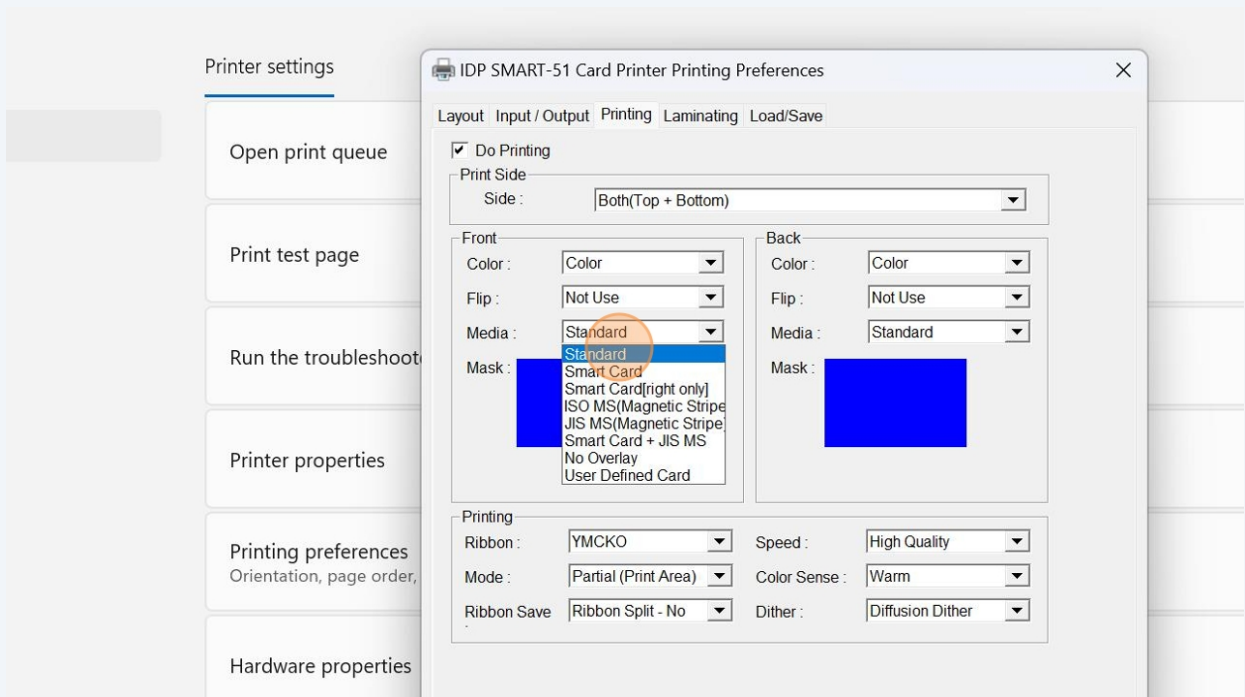
Click "Printing"



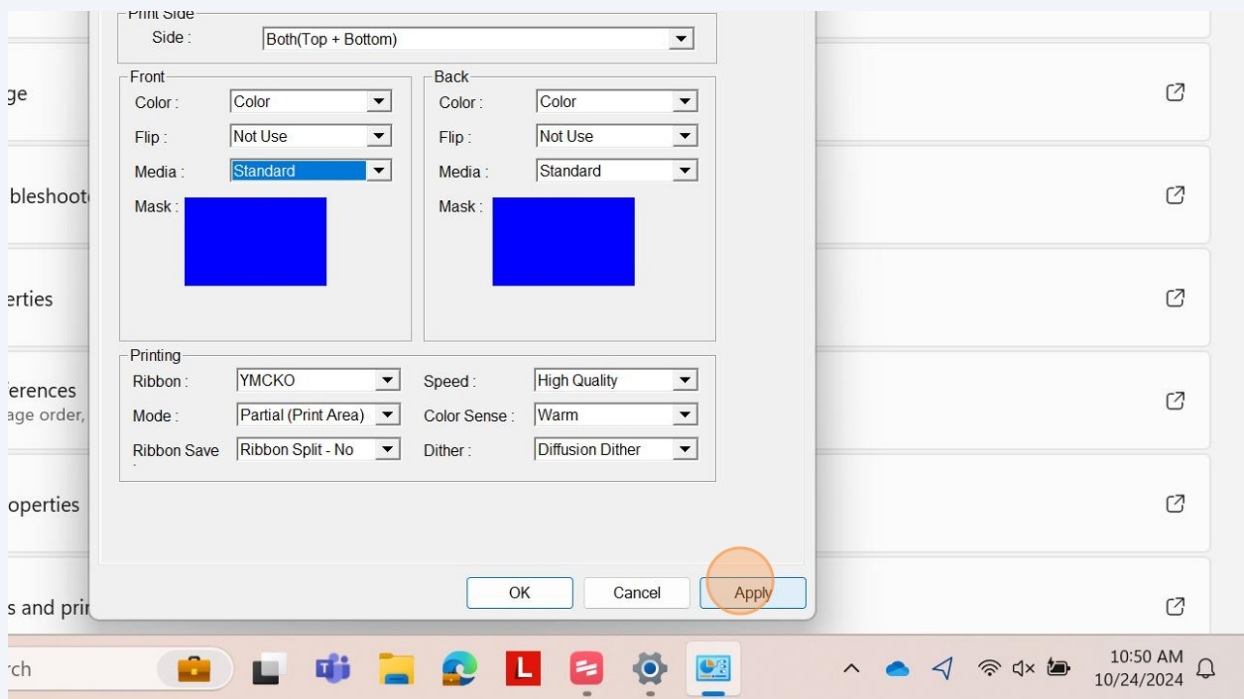
8 Click "Media :"



9 Click "Standard" or the mask/overlay being used



10 Click "Apply"



11 Click "OK" Standard will print full card images, thus not creating "DO NOT PRINT" sections/bitmaps on the card image output.

